



REGIONAL SPECIALISED METEOROLOGICAL CENTRE-TROPICAL CYCLONES, NEW DELHI  
TROPICAL WEATHER OUTLOOK

DEMS-RSMC SPECIAL TROPICAL CYCLONES NEW DELHI DATED 23.10.2023

FROM: RSMC –TROPICAL CYCLONES, NEW DELHI

TO: STORM WARNING CENTRE, NAYPYI TAW (MYANMAR)  
STORM WARNING CENTRE, BANGKOK (THAILAND)  
STORM WARNING CENTRE, COLOMBO (SRILANKA)  
STORM WARNING CENTRE, DHAKA (BANGLADESH)  
STORM WARNING CENTRE, KARACHI (PAKISTAN)  
METEOROLOGICAL OFFICE, MALE (MALDIVES)  
OMAN METEOROLOGICAL DEPARTMENT, MUSCAT (THROUGH RTH JEDDAH)  
YEMEN METEOROLOGICAL SERVICES, REPUBLIC OF YEMEN (THROUGH RTH JEDDAH)  
NATIONAL CENTRE FOR METEOROLOGY, UAE (THROUGH RTH JEDDAH)  
PRESIDENCY OF METEOROLOGY AND ENVIRONMENT, SAUDI ARABIA (THROUGH RTH JEDDAH)  
IRAN METEOROLOGICAL ORGANISATION, (THROUGH RTH JEDDAH)  
QATAR METEOROLOGICAL DEPARTMENT (THROUGH RTH JEDDAH)

**TROPICAL CYCLONE ADVISORY NO. 17 FOR NORTH INDIAN OCEAN (THE BAY OF BENGAL AND THE ARABIAN SEA) VALID FOR NEXT 120 HOURS ISSUED AT 0300 UTC OF 23.10.2023 BASED ON 0000 UTC OF 23.10.2023.**

**SUB: (A) EXTREMELY SEVERE CYCLONIC STORM “TEJ” (PRONOUNCED AS TEJ) OVER WESTCENTRAL ARABIAN SEA**

THE EXTREMELY SEVERE CYCLONIC STORM “TEJ” (PRONOUNCED AS TEJ) OVER WESTCENTRAL ARABIAN SEA CONTINUED TO MOVE NORTHWESTWARDS WITH A SPEED OF 13 KMPH DURING PAST 6 HOURS AND LAY CENTERED AT 0000 UTC OF TODAY, THE 23<sup>RD</sup> OCTOBER OVER WESTCENTRAL ARABIAN SEA, NEAR LATITUDE 14.4°N AND LONGITUDE 53.5°E, ABOUT 200 KM NORTH-NORTHWEST OF SOCOTRA (YEMEN, 41494), 300 KM SOUTH OF SALALAH (OMAN, 41316) AND 240 KM SOUTHEAST OF AL GHADAH (YEMEN, 41398).

IT IS VERY LIKELY TO CONTINUE TO MOVE NORTHWESTWARDS AND WEAKEN INTO A VERY SEVERE CYCLONIC STORM DURING NEXT 06 HOURS. IT IS LIKELY TO CROSS YEMEN COAST CLOSE TO AL- GHADAH DURING 1800 – 2100 UTC OF 23RD OCTOBER AS A **VERY SEVERE CYCLONIC STORM** WITH WIND SPEED OF 125-135 KMPH GUSTING TO 150 KMPH.

| DATE/TIME(UTC) | POSITION<br>LAT. °N/ LONG. °E | MAXIMUM SUSTAINED<br>SURFACE<br>WIND SPEED (KMPH) | CATEGORY OF CYCLONIC<br>DISTURBANCE |
|----------------|-------------------------------|---|-------------------------------------|
| 23.10.23/0000  | 14.4/53.5                     | 165-175 GUSTING TO 195                            | EXTREMELY SEVERE CYCLONIC<br>STORM  |
| 23.10.23/0600  | 14.9/53.1                     | 150-160 GUSTING TO 175                            | VERY SEVERE CYCLONIC STORM          |
| 23.10.23/1200  | 15.3/52.7                     | 135-145 GUSTING TO 160                            | VERY SEVERE CYCLONIC STORM          |

Cloud distribution: (a) Isolated: <25%, Scattered:25-50%, Broken: 51-75%, Solid:>75%, Convection Intensity: (a) Weak: Cloud Top Temperature (CTT) >-25°C, (b) Moderate: CTT: - 25°C to -40°C, (c) Intense: CTT: - 41°C to -70°C and (d) Very Intense: : Less than -70°C  
PROBABILITY OF CYCLOGENESIS (FORMATION OF DEPRESSION):NIL: 0%, LOW: 1-33%, , MODERATE: 34-66% AND HIGH: 67-100%  
This is a guidance Bulletin for WMO/ESCAP Panel Member countries. Visit respective National websites for Country specific Bulletins

|               |           |                        |                            |
|---------------|-----------|------------------------|----------------------------|
| 23.10.23/1800 | 15.6/52.3 | 130-140 GUSTING TO 155 | VERY SEVERE CYCLONIC STORM |
| 24.10.23/0000 | 15.9/51.9 | 80-90 GUSTING TO 100   | CYCLONIC STORM             |
| 24.10.23/1200 | 16.2/51.5 | 40-50 GUSTING TO 60    | DEPRESSION                 |
| 25.10.23/0000 | 16.6/51.0 | 25-35 GUSTING TO 45    | WELL MARKED LOW            |

AS PER INSAT 3D IMAGERY, INTENSITY OF THE SYSTEM IS CHARACTERISED AS T 4.5/5.0. ASSOCIATED BROKEN LOW AND MEDIUM CLOUDS WITH EMBEDDED INTENSE TO VERY INTENSE CONVECTION LAY OVER WESTCENTRAL ARABIAN SEA BETWEEN LATITUDE 12.5°N TO 18.0°N LONGITUDE 50.5°E TO 57.0°E. MINIMUM CLOUD TOP TEMPRATURE IS MINUS 85°C. IR IMAGERY SHOWS INTENSE CONVECTION ENCIRCLING THE SYTEM CENTRE. THE OUTERMOST OUTFLOW BANDS ARE SEEN OVER N SOMALIA EAST YEMEN AND OMAN.

MULTISATELLITE WINDS INDICATE STRONGER WINDS IN THE EASTERN SECTOR. TOTAL PRECIPITABLE WATER IMAGERY INDICATES WARM MOIST AIR INCURSION INTO THE SYSTEM CORE. DRY AIR INCURSION IS EXPECTED FROM ARABIAN PENINSULA AS THE SYSTEM MOVES FURTHER NEAR THE YEMEN-OMAN COASTS.

ASSOCIATED MAXIMUM SUSTAINED WIND SPEED IS 90 KNOTS GUSTING TO 100 KNOTS. THE ESTIMATED CENTRAL PRESSURE IS 966 HPA.

#### **STORM SURGE GUIDANCE:**

STORM SURGE OF ABOUT 2 METER HEIGHT ABOVE THE ASTRONOMICAL TIDE IS LIKELY TO INUNDATE LOW LYING AREAS BETWEEN AL GHAYDAH AND AL FAYDAMI NEAR THE LANDFALL POINT AT THE TIME OF LANDFALL.

#### **SEA CONDITION:**

- **SOUTHWEST ARABIAN SEA:**  
**PHENOMENAL** SEA CONDITION IS PREVAILING AND IT IS LIKELY TO IMPROVE GRADUALLY BECOMING **HIGH TO VERY ROUGH** TILL 1200 UTC OF 23<sup>RD</sup>, VERY ROUGH TO ROUGH TILL 1200 UTC OF 24<sup>TH</sup> OCTOBER AND WOULD IMPROVE THEREAFTER.
- **WESTCENTRAL ARABIAN SEA:**  
**PHENOMENAL** SEA CONDITION IS PREVAILING AND WILL CONTINUE TILL 1200 UTC OF 23<sup>RD</sup> OCTOBER. IT WOULD IMPROVE GRADUALLY THEREAFTER BECOMING **HIGH TO VERY ROUGH** BY 2100 UTC OF 23<sup>RD</sup> OCTOBER. THEREAFTER, IT WOULD IMPROVE GRADUALLY.

#### **(B) DEEP DEPRESSION OVER WESTCENTRAL BAY OF BENGAL**

THE DEEP DEPRESSION OVER WESTCENTRAL BAY OF BENGAL MOVED NORTHEASTWARDS DURING PAST 6 HOURS WITH A SPEED OF 08 KMPH AND LAY CENTERED AT 0530 HOURS IST OF TODAY, THE 23<sup>RD</sup> OCTOBER OVER WESTCENTRAL BAY OF BENGAL, NEAR LATITUDE 16.7°N AND LONGITUDE 86.7°E, ABOUT 400 KM SOUTH OF PARADIP (ODISHA, 42976), 550 KM SOUTH-SOUTHWEST OF DIGHA (WEST BENGAL, 42901), AND 690 KM SOUTH-SOUTHWEST OF KHEPUPARA (BANGLADESH, 41984).

IT IS LIKELY TO INTENSIFY INTO A **CYCLONIC STORM** DURING NEXT 12 HOURS. IT IS VERY LIKELY TO MOVE NEARLY NORTH-NORTHEASTWARDS AND CROSS BANGLADESH COAST BETWEEN KHEPUPARA AND CHITTAGONG AROUND 2200 UTC OF 25TH OCTOBER AS A **DEEP DEPRESSION**.

**FORECAST TRACK AND INTENSITY ARE GIVEN BELOW:**

| DATE/TIME(UTC) | POSITION<br>LAT. °N/ LONG. °E | MAXIMUM SUSTAINED<br>SURFACE<br>WIND SPEED (KMPH) | CATEGORY OF CYCLONIC<br>DISTURBANCE |
|----------------|-------------------------------|---|-------------------------------------|
| 23.10.23/0000  | 16.7/86.7                     | 55-65 GUSTING TO 75                               | DEEP DEPRESSION                     |
| 23.10.23/0600  | 17.5/87.0                     | 55-65 GUSTING TO 75                               | DEEP DEPRESSION                     |
| 23.10.23/1200  | 18.2/87.3                     | 60-70 GUSTING TO 80                               | CYCLONIC STORM                      |
| 23.10.23/1800  | 18.8/87.7                     | 60-70 GUSTING TO 80                               | CYCLONIC STORM                      |
| 24.10.23/0000  | 19.3/88.2                     | 60-70 GUSTING TO 80                               | CYCLONIC STORM                      |
| 24.10.23/1200  | 20.2/89.1                     | 60-70 GUSTING TO 80                               | CYCLONIC STORM                      |
| 25.10.23/0000  | 21.1/89.8                     | 55-65 GUSTING TO 75                               | DEEP DEPRESSION                     |
| 25.10.23/1200  | 21.9/90.3                     | 50-60 GUSTING TO 70                               | DEEP DEPRESSION                     |
| 26.10.23/0000  | 22.8/90.7                     | 25-35 GUSTING TO 45                               | WELL MARKED LOW                     |

AS PER INSAT 3D IMAGERY, INTENSITY OF THE SYSTEM IS CHARACTERISED AS T 2.0. SHEAR PATTERN IS SEEN IN CLOUD IMAGERY.

CLOUDS ARE SHEARED IN NORTHEAST SECTOR. BANDING FEATURES ARE APPEARING IN CLOUD IMAGERY ALONGWITH FURTHER INCREASE IN CONVECTIVE CLOUDS IN CORE AREA, INDICATING FURTHER INTENSIFICATION OF THE SYSTEM.

ASSOCIATED SCATTERED TO BROKEN LOW AND MEDIUM CLOUDS WITH EMBEDDED INTENSE TO VERY INTENSE CONVECTION LAY OVER CENTRAL AND ADJOINING NORTH BAY OF BENGAL BETWEEN LATITUDE 15.0°N TO 20.0°N AND LONGITUDE 84.0°E TO 92.0°E. MINIMUM CLOUD TOP TEMPRATURE IS MINUS 93°C. MULTISATELLITE WINDS INDICATE STRONGER WINDS IN EASTERN SECTOR. TOTAL PRECIPITABLE WATER IMAGERY INDICATES WARM MOIST AIR INCURSION INTO THE SYSTEM CORE.

ASSOCIATED MAXIMUM SUSTAINED WIND SPEED IS 30 KNOTS GUSTING TO 40 KNOTS. THE ESTIMATED CENTRAL PRESSURE IS 1003 HPA.

**WIND GUIDANCE (WARNING MAP ENCLOSED):**

- **WESTCENTRAL BAY OF BENGAL: SQUALLY WIND SPEED REACHING 50-60 KMPH GUSTING TO 70 KMPH IS PREVAILING AND LIKELY TO INCREASE BECOMING 55-65 KMPH GUSTING TO 75 KMPH FROM 1200 UTC 23<sup>RD</sup> TILL 0000 UTC OF 24<sup>TH</sup> OCTOBER. IT IS LIKELY TO DECREASE GRADUALLY THEREAFTER BECOMING SQUALLY WIND SPEED REACHING 40-50 KMPH GUSTING 60 KMPH BY 1200 UTC 24<sup>TH</sup>.**
- **ADJOINING EASTCENTRAL BAY OF BENGAL: SQUALLY WIND SPEED REACHING 45-55 KMPH GUSTING TO 65 KMPH IS LIKELY TO INCREASE GRADUALLY BECOMING 50-60 KMPH GUSTING TO 70 KMPH ON 24<sup>TH</sup> AND DECREASE FROM 25<sup>TH</sup> ONWARDS.**
- **NORTH BAY OF BENGAL:**  
**SQUALLY WIND SPEED REACHING 40-50 KMPH GUSTING TO 60 KMPH IS PREVAILING AND LIKELY TO BECOME 50-60 KMPH GUSTING TO 70 KMPH FROM 1200 UTC OF TODAY. IT WOULD BECOME GALE WIND SPEED REACHING 60-70 KMPH GUSTING TO 80 KMPH ON 24<sup>TH</sup> OCTOBER.**
- **ALONG & OFF ODISHA, WEST BENGAL, BANGLADESH AND NORTH MYANMAR COASTS:**  
**SQUALLY WIND SPEED REACHING 40-50 KMPH GUSTING TO 60 KMPH IS LIKELY FROM**

1200 UTC OF 23<sup>RD</sup> TO 24<sup>TH</sup> ALONG & OFF ODISHA COAST. **SQUALLY WIND SPEED REACHING 40-50 KMPH GUSTING TO 60 KMPH** IS LIKELY TO COMMENCE ALONG & OFF WEST BENGAL, BANGLADESH AND NORTH MYANMAR COASTS FROM 0000 UTC OF 24<sup>TH</sup>. IT WOULD GRADUALLY INCREASE BECOMING **55-65 KMPH GUSTING TO 75 KMPH** ALONG & OFF BANGLADESH COAST, **50-60 KMPH GUSTING TO 70 KMPH** ALONG & OFF NORTH MYANMAR COAST AND **45-55 KMPH GUSTING TO 65** ALONG & OFF WEST BENGAL COAST ON 25<sup>TH</sup> OCTOBER.

## SEA CONDITION

- **WESTCENTRAL BAY OF BENGAL: ROUGH TO VERY ROUGH SEA CONDITION** IS PREVAILING AND WILL CONTINUE TILL 25<sup>TH</sup> OCTOBER. IT IS LIKELY TO IMPROVE GRADUALLY THEREAFTER.
- **ADJOINING EASTCENTRAL BAY OF BENGAL: MODERATE TO ROUGH SEA CONDITION** IS PREVAILING AND LIKELY TILL 24<sup>TH</sup> OCTOBER. IT IS LIKELY TO IMPROVE GRADUALLY THEREAFTER.
- **NORTH BAY OF BENGAL:**  
**ROUGH SEA CONDITION** IS LIKELY ON 23<sup>RD</sup> AND BECOMING **VERY ROUGH TO HIGH** FROM 24<sup>TH</sup> AND **VERY ROUGH** ON 25<sup>TH</sup> OCTOBER.
- **ALONG & OFF ODISHA, WEST BENGAL, BANGLADESH AND NORTH MYANMAR COASTS:**  
**ROUGH SEA CONDITION** IS LIKELY ON 23<sup>RD</sup> AND BECOMING **ROUGH TO VERY ROUGH** SEA CONDITION FROM 24<sup>TH</sup> TO 25<sup>TH</sup> OCTOBER.

## REMARKS:

### ARABIAN SEA:

MADDEN JULIAN OSCILLATION INDEX IS IN PHASE 8 WITH AMPLITUDE LESS THAN 1. IT WOULD CONTINUE IN SAME PHASE DURING NEXT 4 DAYS. SEA SURFACE TEMPERATURE IS 27-28°C OVER WESTCENTRAL ARABIAN SEA. THE TROPICAL CYCLONE HEAT POTENTIAL IS AROUND 20-30 KJ/CM<sup>2</sup> OVER WESTCENTRAL ARABIAN SEA NEAR THE SYSTEM LOCATION AND ALSO ALONG & OFF OMAN-YEMEN COASTS. THE LOW LEVEL POSITIVE VORTICITY IS AROUND 200-250 X10<sup>-6</sup>S<sup>-1</sup> TO THE SOUTH OF THE SYSTEM CENTER WITH VERTICAL EXTENSION UPTO 200 HPA LEVEL. THE POSITIVE LOW LEVEL CONVERGENCE IS ABOUT 30X10<sup>-5</sup>S<sup>-1</sup> TO THE SOUTH OF SYSTEM CENTER. POSITIVE UPPER LEVEL DIVERGENCE IS ABOUT 30 X10<sup>-5</sup> S<sup>-1</sup> AROUND THE SYSTEM CENTRE. WIND SHEAR IS LOW TO MODERATE (10-15 KNOTS) OVER SYSTEM AREA AND ALONG THE EXPECTED TRACK.

EXISTING FEATURES INDICATE THAT THE SYSTEM IS OVER THE SEA SURFACE OF LOWER SST OF 27DEGC AND ENTERED INTO AN AREA OF LOW OCEAN THERMAL ENERGY. MORE OVER, THE SYSTEM IS GOING TO EXPERINCE DRY COLD AIR INCURSION INTO THE CORE FROM ARABIAN PENINSULAR REGION. UNDER SUCH ENVIRONMENTAL CONDCTIONS, THE SYSTEM WILL WEAKEN FURTHER BEFORE ITS LANDFALL.

MOST OF THE MODELS ARE INDICATING THE SYSTEM TO CROSS YEMEN (EXCEPT IMD GEFS). IMD MULTI MODEL GUIDANCE IS ALSO INDICATING LANDFALL OVER YEMEN. MOST OF THE MODELS ARE INDICATING WEAKENING PRIOR TO LANDFALL. THIS IS SUPPORTED BY DECREASING OCEAN THERMAL ENERGY AND INCREASING WIND SHEAR AND COLD DRY AIR ENTRAINMENT WHEN SYSTEM WILL APPROACH COAST.

IN VIEW OF ABOVE, THE EXTREMELY SEVERE CYCLONIC STORM "TEJ" (PRONOUNCED AS TEJ) IS VERY LIKELY TO MOVE NORTHWESTWARDS AND CROSS YEMEN COAST CLOSE TO AL GHADAH (YEMEN) DURING 1800 – 2100 UTC OF 23RD OCTOBER AS A VERY SEVERE CYCLONIC STORM WITH WIND SPEED OF 125-135 KMPH GUSTING TO 150 KMPH (70 KNOTS GUSTING 80 KNOTS).

#### **BAY OF BENGAL:**

MJO IS NOT SUPPORTIVE FOR CYCLOGENESIS OVER BOB. HOWEVER, WARM SST AND LOW TO MODERATE VERTICAL WIND SHEAR OVER SOUTH & CENTRAL BOB ARE LIKELY TO SUPPORT THE DEVELOPMENT OF DEEP DEPRESSION OVER NORTH BOB. THE GLOBAL MODELS ARE IN AGREEMENT THAT THE DEEP DEPRESSION OVER WESTCENTRAL BAY OF BENGAL IS LIKELY TO INTENSIFY INTO A CYCLONIC STORM OVER WEST CENTRAL AND ADJOINING NORTH BAY OF BENGAL AROUND 1200 UTC OF 23<sup>RD</sup> OCTOBER 2023. THERE IS CONSENSUS AMONG VARIOUS MODELS WRT MOVEMENT TOWARDS BANGLADESH.

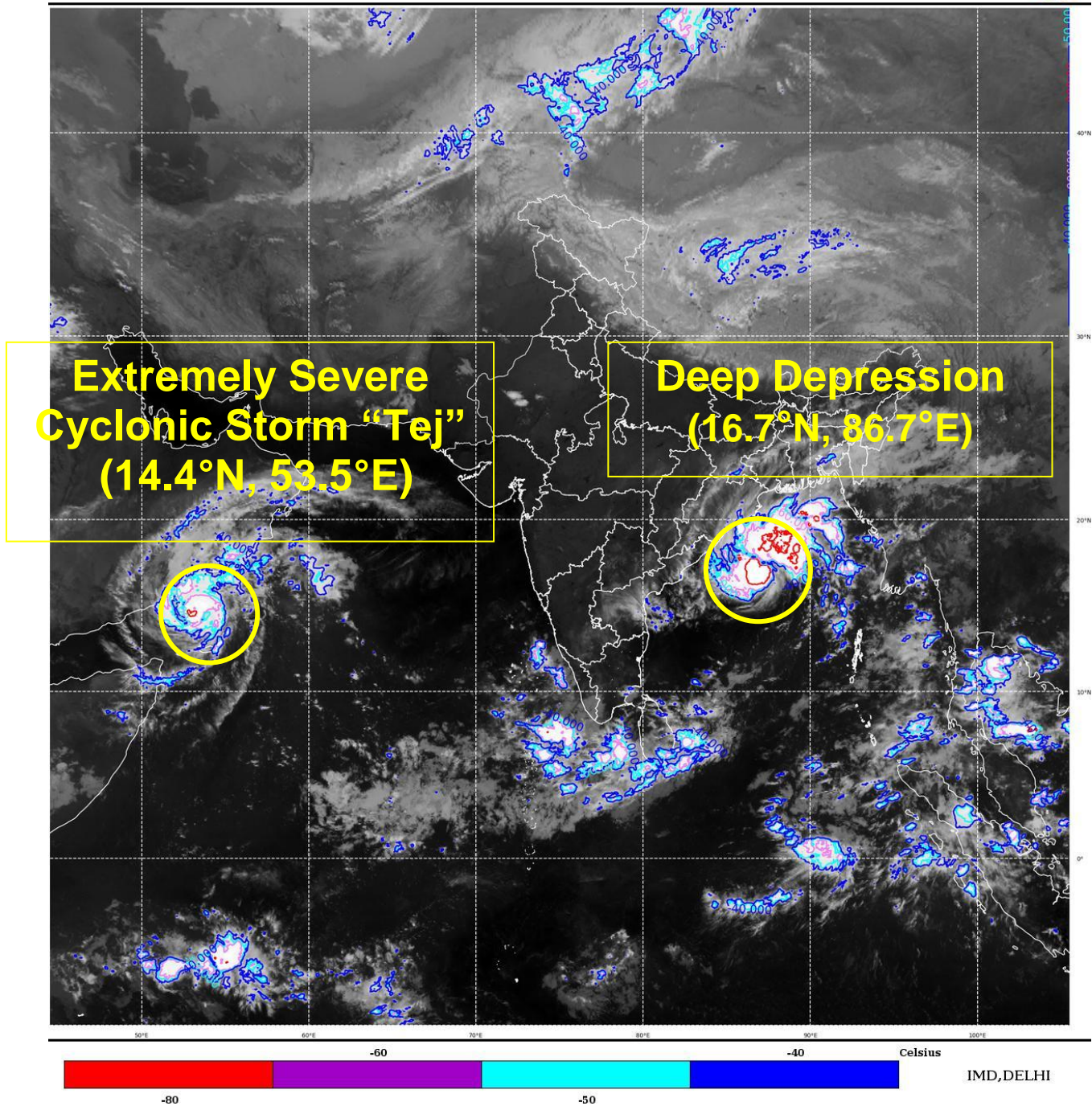
CONSIDERING ALL THESE, THE DEEP DEPRESSION OVER WESTCENTRAL BAY OF BENGAL IS VERY LIKELY TO INTENSIFY FURTHER INTO A CYCLONIC STORM DURING NEXT 12 HOURS. IT IS LIKELY TO MOVE NEARLY NORTH-NORTHEASTWARDS AND CROSS BANGLADESH COAST BETWEEN KHEPUPARA AND CHITTAGONG AROUND 2200 UTC OF 25<sup>TH</sup> OCTOBER AS A DEEP DEPRESSION.

(R K JENAMANI )  
SCIENTIST-G  
RSMC, NEW DELHI



SAT : INSAT-3D IMG  
IMG\_TIR1\_TEMP 10.8 um CTBT  
LIC Mercator

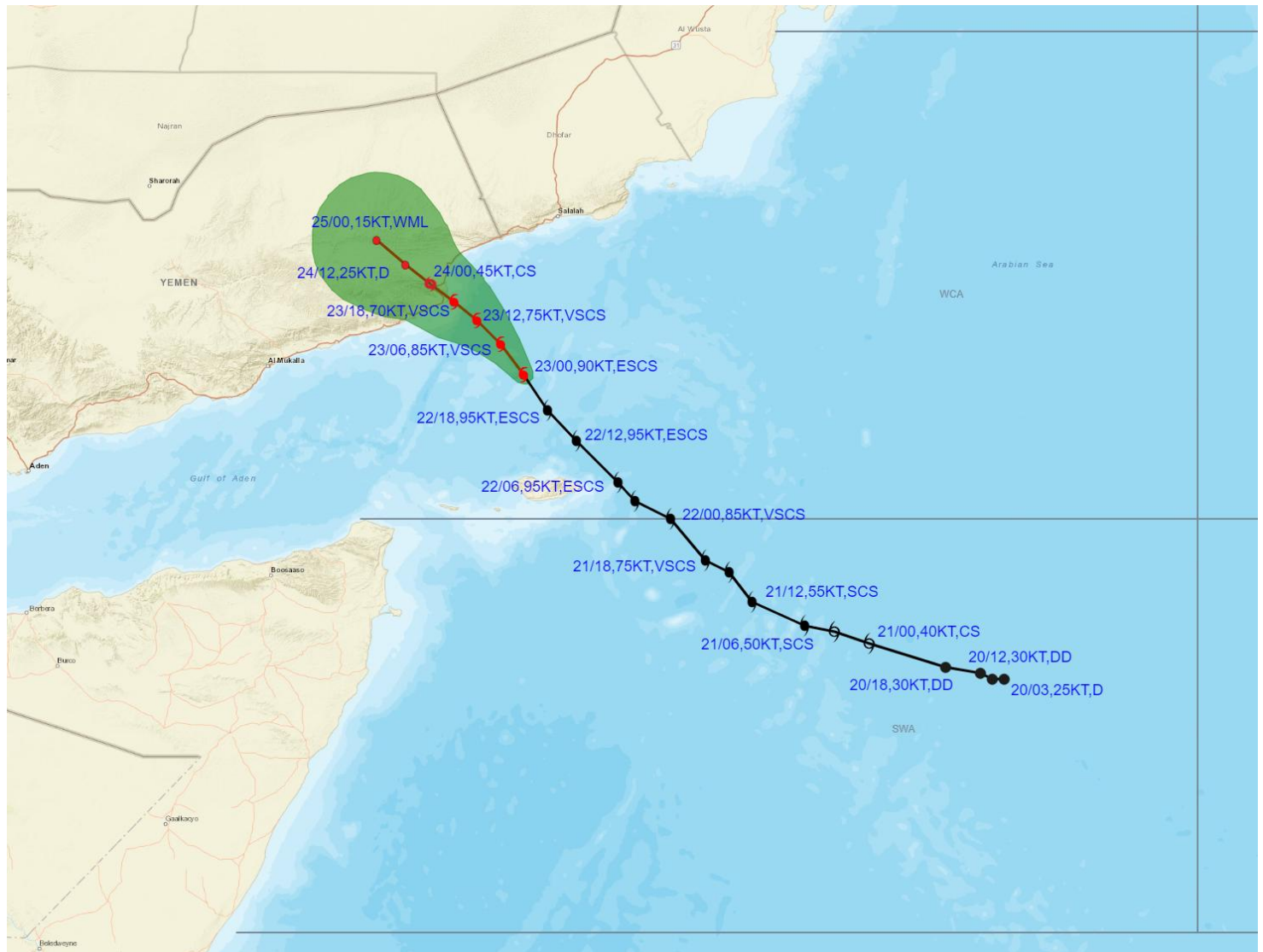
23-10-2023/(0130 to 0156) GMT  
23-10-2023/(0700 to 0726) IST



Cloud distribution: (a) Isolated: <25%, Scattered:25-50%, Broken: 51-75%, Solid:>75%, Convection Intensity: (a) Weak: Cloud Top Temperature (CTT) >-25°C, (b) Moderate: CTT: - 25°C to -40°C, (c) Intense: CTT: - 41°C to -70°C and (d) Very Intense: : Less than -70°C  
PROBABILITY OF CYCLOGENESIS (FORMATION OF DEPRESSION):NIL: 0%, LOW: 1-33%, , MODERATE: 34-66% AND HIGH: 67-100%  
This is a guidance Bulletin for WMO/ESCAP Panel Member countries. Visit respective National websites for Country specific Bulletins



# OBSERVED AND FORECAST TRACK ALONGWITH CONE OF UNCERTAINTY OF EXTREMELY SEVERE CYCLONIC STORM “TEJ” OVER WESTCENTRAL ARABIAN SEA BASED ON 0000 UTC (0530 IST) OF 23<sup>RD</sup> OCTOBER 2023.



DATE/TIME IN UTC  
IST=UTC + 0530  
L: LOW PRESSURE AREA  
WML: WELL MARKED LOW PRESSURE AREA  
D: DEPRESSION (17-27 KT)  
DD: DEEP DEPRESSION (28-33 KT)  
CS: CYCLONIC STORM (34-47 KT)  
SCS: SEVERE CYCLONIC STORM (48-63KT)  
VSCS: VERY SEVERE CYCLONIC STORM (64-89 KT)  
ESCS: EXTREMELY SEVERE CYCLONIC STORM (90-119 KT)  
SuCS: SUPER CYCLONIC STORM ( $\geq 120$  KT)

● LESS THAN 34 KT  
● 34-47 KT  
●  $\geq 48$  KT  
— OBSERVED TRACK  
— FORECAST TRACK  
▲ CONE OF UNCERTAINTY

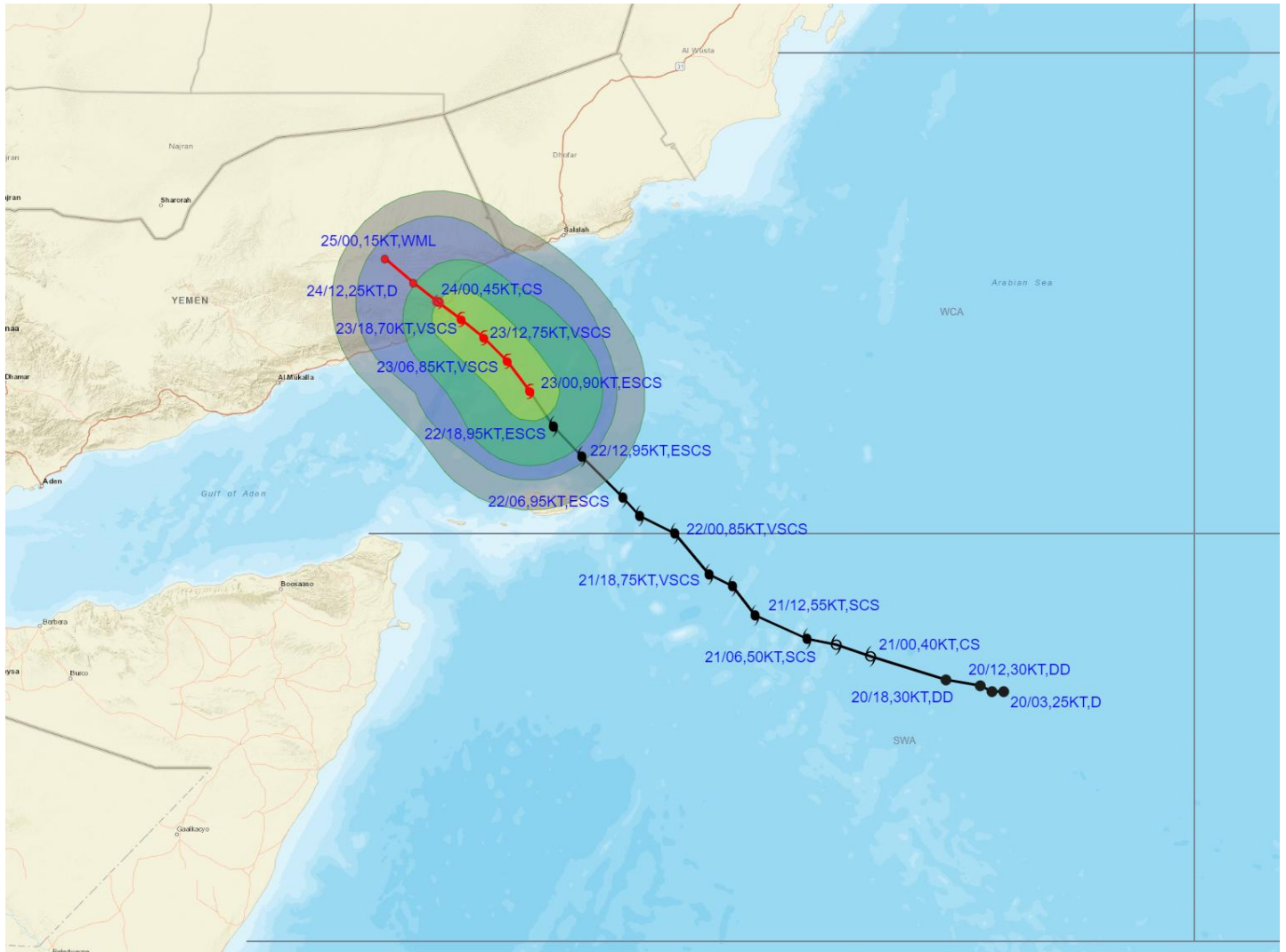
| Forecast      | DISTANCE(KM) AND DIRECTION FROM STATIONS |          |            |
|---------------|--|----------|------------|
| Date and Time | SOCOTRA                                  | SALALAH  | AL-GHAIDAH |
| 24.10.23/0000 | 430, NNW                                 | 270, WSW | 30, SW     |
| 25.10.23/0000 | 540, NW                                  | 330, W   | 130, WNW   |

Cloud distribution: (a) Isolated: <25%, Scattered:25-50%, Broken: 51-75%, Solid:>75%, Convection Intensity: (a) Weak: Cloud Top Temperature (CTT) >-25°C, (b) Moderate: CTT: - 25°C to -40°C, (c) Intense: CTT: - 41°C to -70°C and (d) Very Intense: : Less than -70°C  
PROBABILITY OF CYCLOGENESIS (FORMATION OF DEPRESSION):NIL: 0%, LOW: 1-33%, , MODERATE: 34-66% AND HIGH: 67-100%  
This is a guidance Bulletin for WMO/ESCAP Panel Member countries. Visit respective National websites for Country specific Bulletins





# OBSERVED AND FORECAST TRACK ALONGWITH QUADRANT WIND DISTRIBUTION OF EXTREMELY SEVERE CYCLONIC STORM “TEJ” OVER WESTCENTRAL ARABIAN SEA BASED ON 0000 UTC (0530 IST) OF 23<sup>RD</sup> OCTOBER 2023.



DATE/TIME IN UTC

IST=UTC + 0530

L: LOW PRESSURE AREA

WML: WELL MARKED LOW PRESSURE AREA

D: DEPRESSION (17-27 KT)

DD: DEEP DEPRESSION (28-33 KT)

CS: CYCLONIC STORM (34-47 KT)

SCS: SEVERE CYCLONIC STORM (48-63 KT)

VSCS: VERY SEVERE CYCLONIC STORM (64-89 KT)

ESCS: EXTREMELY SEVERE CYCLONIC STORM (90-119 KT)

SuCS: SUPER CYCLONIC STORM (≥ 120 KT)

● LESS THAN 34 KT

○ 34-47 KT

● ≥ 48 KT

— OBSERVED TRACK

— FORECAST TRACK

— CONE OF UNCERTAINTY

AREA OF MAXIMUM SUSTAINED WIND SPEED:

— 28-33 KT (52-61 KMPH)

— 34-49 KT (62-91 KMPH)

— 50-63 KT (92-117 KMPH)

— ≥ 64 KT (≥118 KMPH)

## IMPACT OVER THE SEA

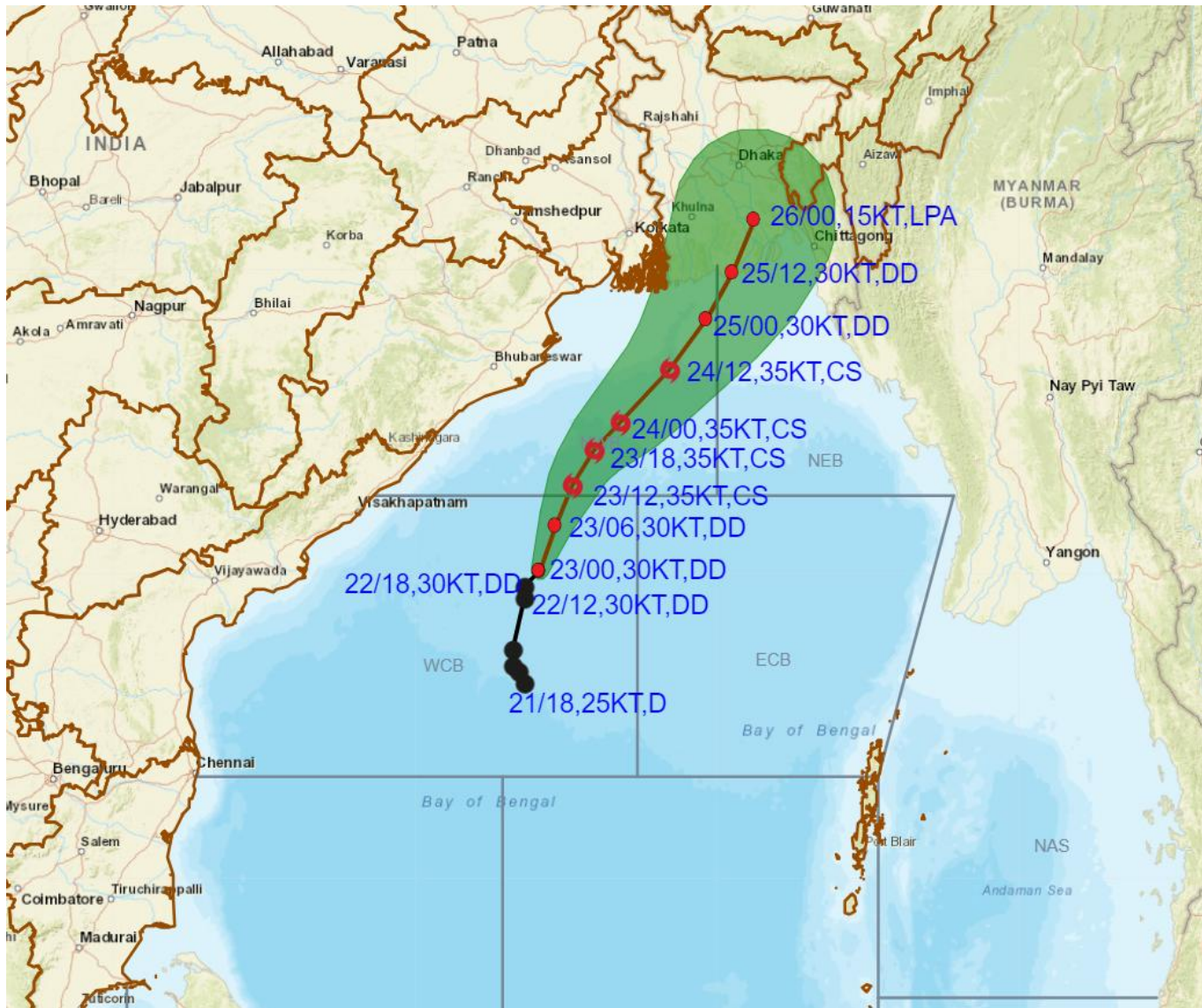
| MSW (knot/kmph) | Impact                 | Action                                 |
|-----------------|------------------------|--|
| 28-33 (52-61)   | Very rough seas        | Total suspension of fishing operations |
| 34-49 (62-91)   | High to very high seas | Total suspension of fishing operations |
| 50-63 (92-117)  | Very high seas         | Total suspension of fishing operations |
| ≥ 64 (≥118)     | Phenomenal             | Total suspension of fishing operations |

Cloud distribution: (a) Isolated: <25%, Scattered:25-50%, Broken: 51-75%, Solid:>75%, Convection Intensity: (a) Weak: Cloud Top Temperature (CTT) >-25°C, (b) Moderate: CTT: - 25°C to -40°C, (c) Intense: CTT: - 41°C to -70°C and (d) Very Intense: : Less than -70°C  
PROBABILITY OF CYCLOGENESIS (FORMATION OF DEPRESSION):NIL: 0%, LOW: 1-33%, , MODERATE: 34-66% AND HIGH: 67-100%  
This is a guidance Bulletin for WMO/ESCAP Panel Member countries. Visit respective National websites for Country specific Bulletins





**OBSERVED AND FORECAST TRACK ALONGWITH CONE OF UNCERTAINTY OF DEEP DEPRESSION OVER WESTCENTRAL BAY OF BENGAL BASED ON 0000 UTC (0530 IST) OF 23<sup>RD</sup> OCTOBER 2023.**



DATE/TIME IN UTC

IST=UTC + 0530

L: LOW PRESSURE AREA

WML: WELL MARKED LOW PRESSURE AREA

D: DEPRESSION (17-27 KT)

DD: DEEP DEPRESSION (28-33 KT)

CS: CYCLONIC STORM (34-47 KT)

SCS: SEVERE CYCLONIC STORM (48-63KT)

VSCS: VERY SEVERE CYCLONIC STORM (64-89 KT)

ESCS: EXTREMELY SEVERE CYCLONIC STORM (90-119 KT)

SuCS: SUPER CYCLONIC STORM ( $\geq 120$  KT)

● LESS THAN 34 KT

○ 34-47 KT

●  $\geq 48$  KT

— OBSERVED TRACK

— FORECAST TRACK

▲ CONE OF UNCERTAINTY

Cloud distribution: (a) Isolated: <25%, Scattered: 25-50%, Broken: 51-75%, Solid: >75%, Convection Intensity: (a) Weak: Cloud Top Temperature (CTT) >-25°C, (b) Moderate: CTT: -25°C to -40°C, (c) Intense: CTT: -41°C to -70°C and (d) Very Intense: : Less than -70°C  
PROBABILITY OF CYCLOGENESIS (FORMATION OF DEPRESSION): NIL: 0%, LOW: 1-33%, MODERATE: 34-66% AND HIGH: 67-100%  
This is a guidance Bulletin for WMO/ESCAP Panel Member countries. Visit respective National websites for Country specific Bulletins





# OBSERVED AND FORECAST TRACK ALONGWITH QUADRANT WIND DISTRIBUTION OF DEEP DEPRESSION OVER WESTCENTRAL BAY OF BENGAL BASED ON 0000 UTC (0530 IST) OF 23<sup>RD</sup> OCTOBER 2023.



DATE/TIME IN UTC

IST=UTC + 0530

L: LOW PRESSURE AREA

WML: WELL MARKED LOW PRESSURE AREA

D: DEPRESSION (17-27 KT)

DD: DEEP DEPRESSION (28-33 KT)

CS: CYCLONIC STORM (34-47 KT)

SCS: SEVERE CYCLONIC STORM (48-63 KT)

VSCS: VERY SEVERE CYCLONIC STORM (64-89 KT)

ESCS: EXTREMELY SEVERE CYCLONIC STORM (90-119 KT)

SuCS: SUPER CYCLONIC STORM ( $\geq 120$  KT)

● LESS THAN 34 KT

○ 34-47 KT

●  $\geq 48$  KT

— OBSERVED TRACK

— FORECAST TRACK

— CONE OF UNCERTAINTY

AREA OF MAXIMUM SUSTAINED WIND SPEED:

— 28-33 KT (52-61 KMPH)

— 34-49 KT (62-91 KMPH)

— 50-63 KT (92-117 KMPH)

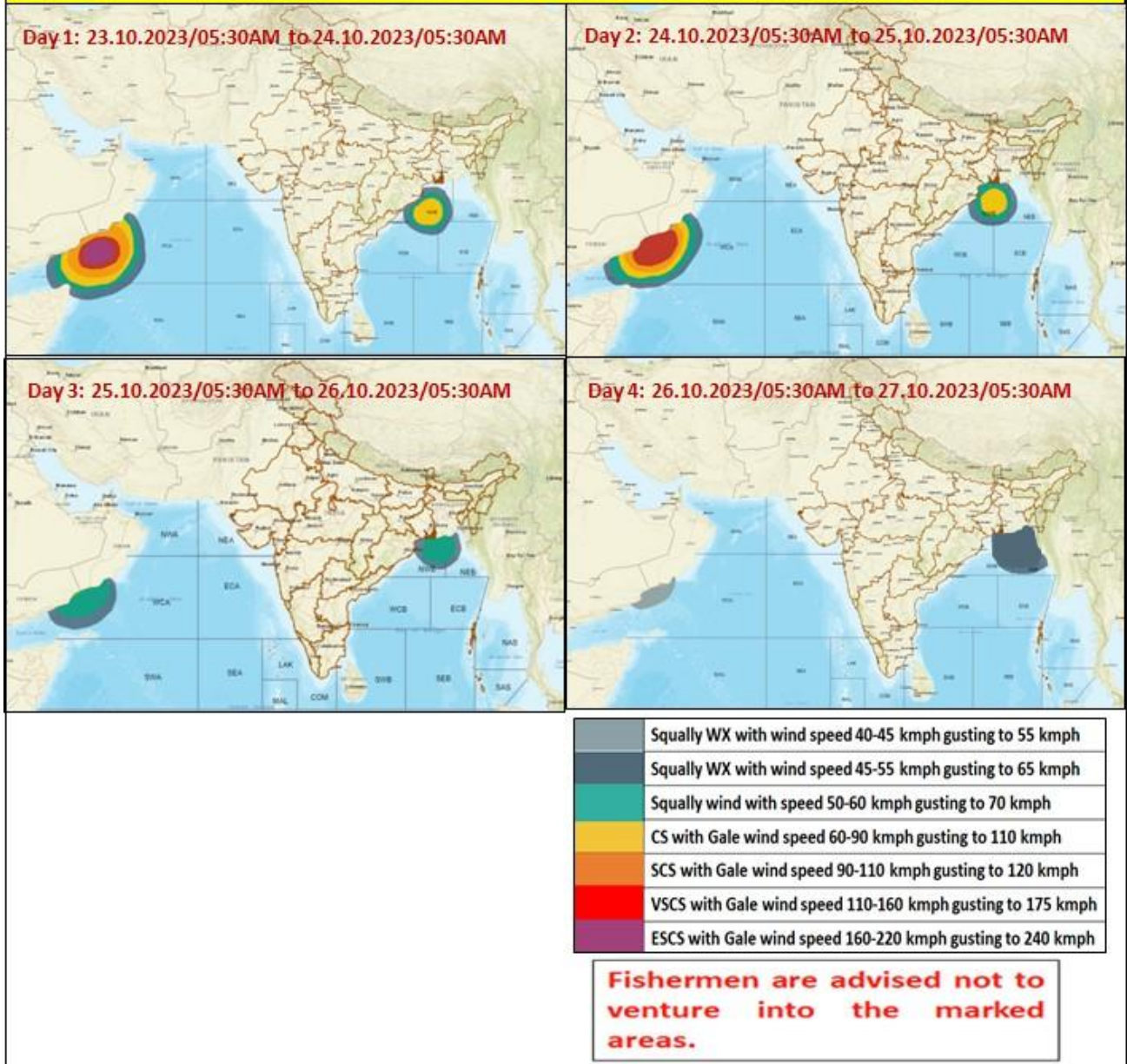
—  $\geq 64$  KT ( $\geq 118$  KMPH)

## IMPACT OVER THE SEA

| MSW (knot/kmph)          | Impact                 | Action                                 |
|--------------------------|------------------------|--|
| 28-33 (52-61)            | Very rough seas        | Total suspension of fishing operations |
| 34-49 (62-91)            | High to very high seas | Total suspension of fishing operations |
| 50-63 (92-117)           | Very high seas         | Total suspension of fishing operations |
| $\geq 64$ ( $\geq 118$ ) | Phenomenal             | Total suspension of fishing operations |

Cloud distribution: (a) Isolated: <25%, Scattered: 25-50%, Broken: 51-75%, Solid: >75%, Convection Intensity: (a) Weak: Cloud Top Temperature (CTT) >-25°C, (b) Moderate: CTT: - 25°C to -40°C, (c) Intense: CTT: - 41°C to -70°C and (d) Very Intense: : Less than -70°C  
PROBABILITY OF CYCLOGENESIS (FORMATION OF DEPRESSION): NIL: 0%, LOW: 1-33%, MODERATE: 34-66% AND HIGH: 67-100%  
This is a guidance Bulletin for WMO/ESCAP Panel Member countries. Visit respective National websites for Country specific Bulletins

## Fishermen warning graphics





## STORM SURGE GUIDANCE:

STORM SURGE OF ABOUT 2 METER HEIGHT ABOVE THE ASTRONOMICAL TIDE IS LIKELY TO INUNDATE LOW LYING AREAS BETWEEN AL GHAYDAH AND AL FAYDAMI NEAR THE LANDFALL POINT AT THE TIME OF LANDFALL.

